

*Workflow Essentials (Manufacturing):*

## **Drives your manufacturing business' workflow and information management**



"In looking for a system that keeps the sales and marketing team humming, your manufacturing team co-ordinated and on-task, your admin overhead down, as well as ensuring you stay informed - you'll wonder how you ever did without *Workflow Essentials (Manufacturing)*!"

*Workflow Essentials (Manufacturing)* offers a consistent, easy-to-use and easy-to-learn interface to keep your manufacturing on track.

### **Why have this?**

The phone rings. It's Mrs Smith looking for her overdue order. Peter takes down the order details and tells Mrs Smith that he'll chase it up straight away.

As Peter walks from his desk to the production area, Steve interrupts with a lost purchase order query, Mary raises a concern with incorrect pricing on an invoice, Ashley is looking for her installation work order and Kevin wants to question the staging of his current job.

The phone rings two hours later. It's Mrs Smith looking for her order and the reason why Peter had forgotten to ring her back

### **When you can have this?**

The phone rings. It's Mrs Smith ringing about the status of her job (which of course is not overdue).

Peter answers the phone and immediately brings up her job within *Workflow Essentials (Manufacturing)*. Peter indicates to Mrs Smith that 3 of 5 components are now complete, with the other 2 due to be in their final stage of manufacture that afternoon. Peter asks if there is anything further that their firm may be able to assist her with.

As the call ends, Peter returns to his previous task (knowing there will be no interruption regarding lost purchase orders, incorrect pricing, undelivered work order, or job staging issues).



OST t/a OST Database Group  
Address: 9 Koola St, Wishart QLD 4122  
Ph: (07) 3420 5457 Fax: 3420 5458  
Mobile: 0404 465 185

Email: [contact@ostdatabasegroup.com.au](mailto:contact@ostdatabasegroup.com.au)  
Web: [www.ostdatabasegroup.com.au](http://www.ostdatabasegroup.com.au)

For a list of the services we provide please visit our website at: [www.ostdatabasegroup.com.au](http://www.ostdatabasegroup.com.au)

# Turns stumbling blocks into stepping stones...

# For Business Management Workflow Essentials

Manufacturing

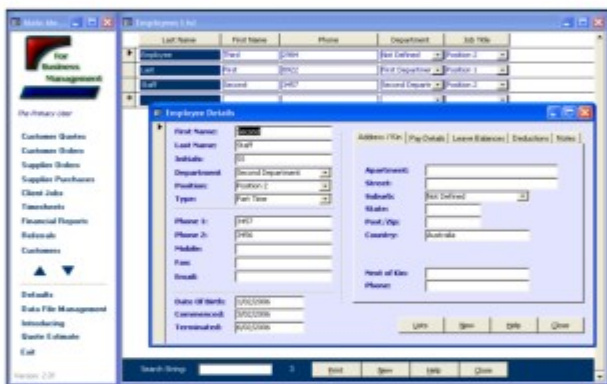
When used as a base product, *For Business Management - Workflow Essentials (Manufacturing)\** helps your business manage the key functions and processes within the **Five Portals of Business**:

- **Resources** - Assets, Employees, Stock...
- **Marketing** - Advertising, Leads, Sales...
- **Operations** - Jobs, Sales, Production, Systems...
- **Administration** - Sales Purchasing, Payroll Tracking...
- **Leadership** - Financials, KPIs, Forecasting...

\* Customisation is available to enhance the products' suitability for your specific workflow and information requirements.



With our unique template system, *Workflow Essentials (Manufacturing)* building blocks can be customised for a relatively **LOW COST**



The 'Out-of-the-box' version of *For Business Management - Workflow Essentials (Manufacturing)* contains components to assist you in managing:

- **Customer/Client Relationships** - including Marketing sources, enquiry/contact types, follow up actions, file notes, associated documents, and associated quotes, jobs and orders...
- **Client Jobs** - Including quote details, job details, links to parts, items, labour, manufacturing stages, job costing, timesheet entries, job task tracking, bill of materials, automatic generation of purchase orders...
- **Products, parts and labour tracking** - including pricing, stock and reorder levels, cost tracking, price breaks, stocktake lists & stock cards, bar code support...
- **Staff & Subcontractors** - including general details, incidents, issues professional development, contacts, timesheets...
- **Assets** - including asset numbers, depreciation, maintenance and loan history...
- **Automated Emails** - the ability to convert quotes, orders and work orders to pdf documents and link to pre-defined emails.
- **Action Lists** - for keeping on top of current and future tasks requiring attention.

Please contact us for a **FREE** demonstration version of *Workflow Essentials (Manufacturing)*



OST t/a OST Database Group  
 Address: 9 Koola St, Wishart QLD 4122  
 Ph: (07) 3420 5457 Fax: 3420 5458  
 Mobile: 0404 465 185  
 Email: contact@ostdatabasegroup.com.au  
 Web: www.ostdatabasegroup.com.au

For a list of the services we provide please visit our website at: [www.ostdatabasegroup.com.au](http://www.ostdatabasegroup.com.au)